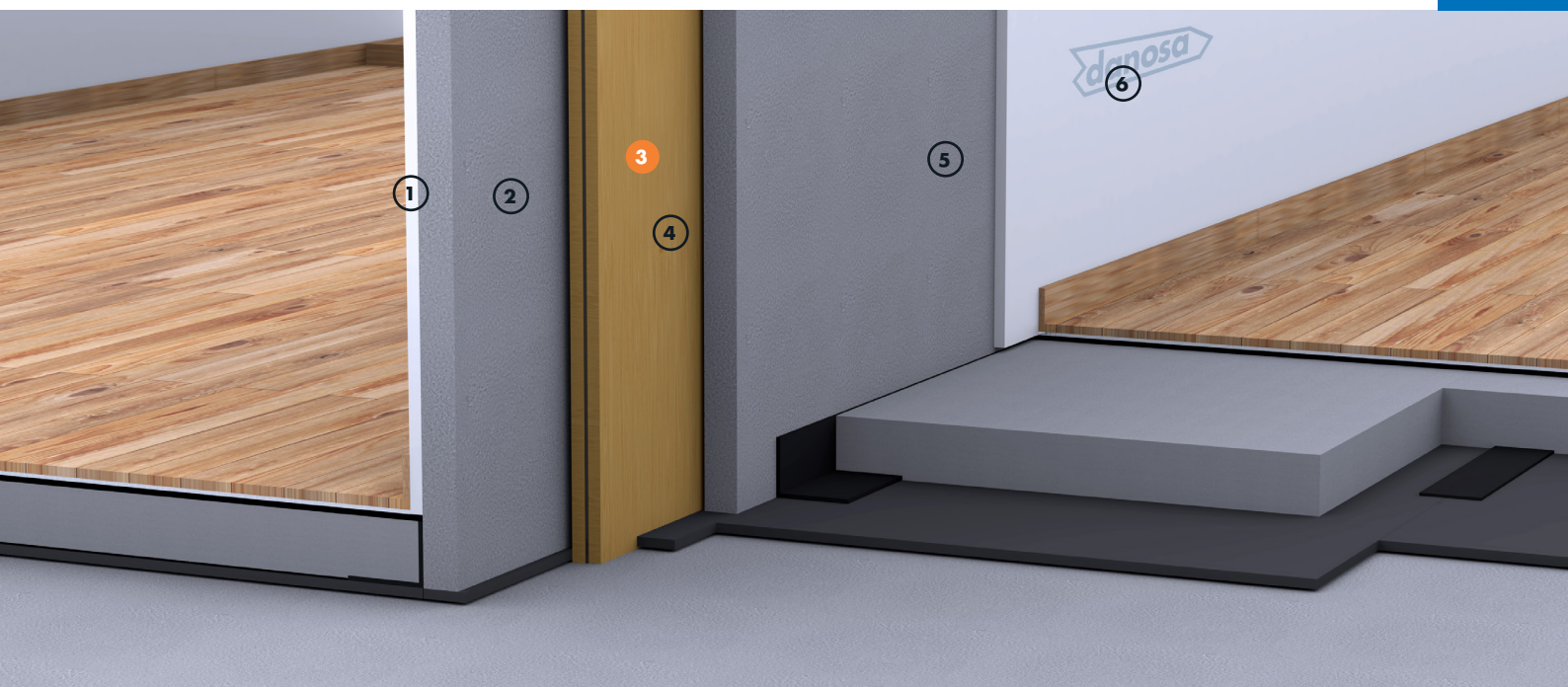


# SEPARATING WALL WITH DOUBLE HOLLOW CERAMIC BRICK



DIV1

Acoustic insulation: High-density acoustic membrane covered by cotton wadding



## NOISE PROTECTION DANOFON®

### ADVANTAGES

- Airborne noise insulation towards  $D_{nTw} > 50$  dB
- The acoustic membrane of the multilayer compensates the losses of mass by electric installation recessed
- System with membrane resonator that improves acoustic performance at low frequencies
- Due to its high tear resistance, it can be fix mechanically, avoiding the dangers of sticking
- Due to the high acoustic performance of the product, light or plaster walls can be used.
- The resistance of the partitions is set out in DIT No. 439
- The interior partitions can go on the floating mortar (ratio 1: 5)
- Traditional system with robustness image

### APPLICATION AREAS

- Public or private residential buildings
- Public buildings like hotels
- Sanitary buildings: hospitals, outpatients, health centers, residences
- Teaching buildings: schools, universities, nurseries

### LEGEND

#### Partition wall:

- ① Plastered
- ② Double hollow ceramic brick
- ③ DANOFON® acoustic insulation
- ④ Acoustic insulation fixing
- ⑤ Double hollow ceramic brick
- ⑥ Plastered

# SEPARATING WALL WITH DOUBLE HOLLOW CERAMIC BRICK



Acoustic insulation: High-density acoustic membrane covered by cotton wadding

## TECHNICAL DETAILS

Function	Product	Description	Property	Value
Acoustic insulation absorbing at low, medium and high frequencies	<b>DANOFON®</b>	Roll formed by a high-density membrane with cotton wadding on each side.	$R_w$	54-63 dBA

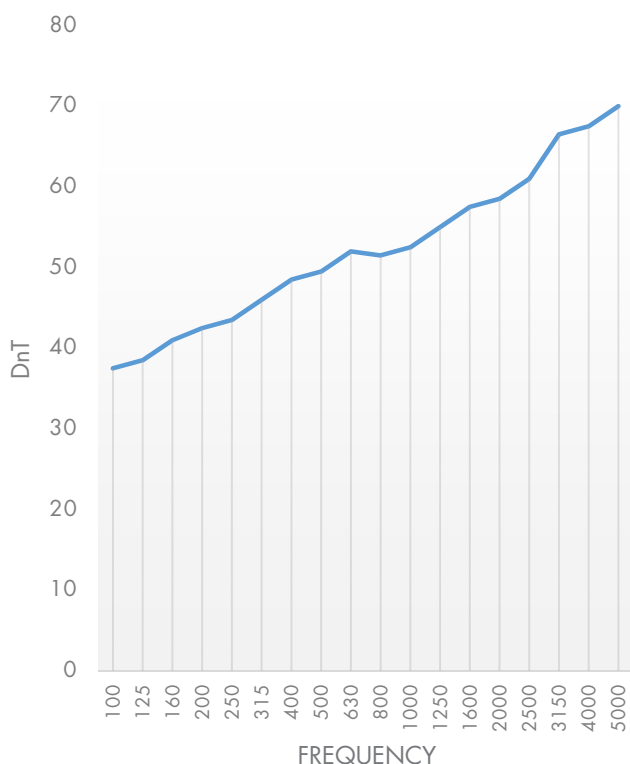
Note: This sheet is included in an acoustic box-in-box system.

## APPLICATION METHOD

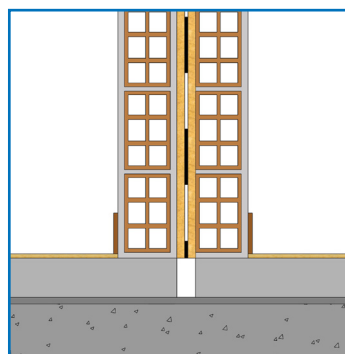
Acoustic insulation of brick separating wall consisting of: 7 cm double hollow brick double wall plastered with 1.5 cm thick, independent of the structure with strips Desolidarizador de muros throughout its perimeter; 28 mm multilayer panel

thick, DANOFON®, mechanically fixed to the support by means of Acoustic Insulation Fixings of 40 inside, fully installed.

## GRAPH



## CONSTRUCTION DETAILS



Junction of separating wall with the floor